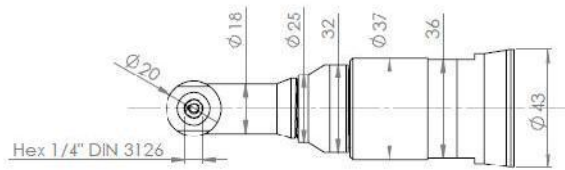
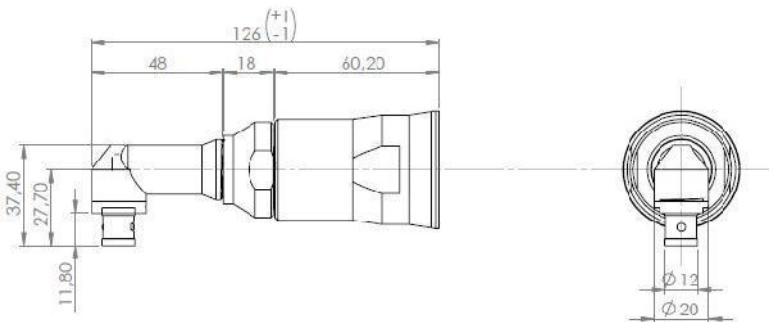


# ANG HD16 for KBL 30



| Nurri | Description    | Code     |
|-------|----------------|----------|
| 01    | Flange motor   | 251242   |
| 02    | Flange head    | 234549   |
| 03    | 90° Angle head | 234521/1 |



## **Instructions:**

- Assemble parts # 01,02 and 03. Do not fix them.
- Remove the stop ring (see the picture below):



- Unscrew and remove the torque adjusting nut:



- Unscrew and remove the locking nut (pay attention on the left thread) :



- reassemble the clutch nut and the stop ring. Then tighten this assembly on the screwdriver (fix part #01 to the clutch ) using a 36 wrench. And match to the male 1/4" thread of the angle head:



- Fix part #02 counter clockwise, while holding the screwdriver and part #03 (as in Picture 2), use a 32 wrench.



Fig.2

**Kolver recommend using a glue/threadlocker on the heads to prevent the head from loosening.**